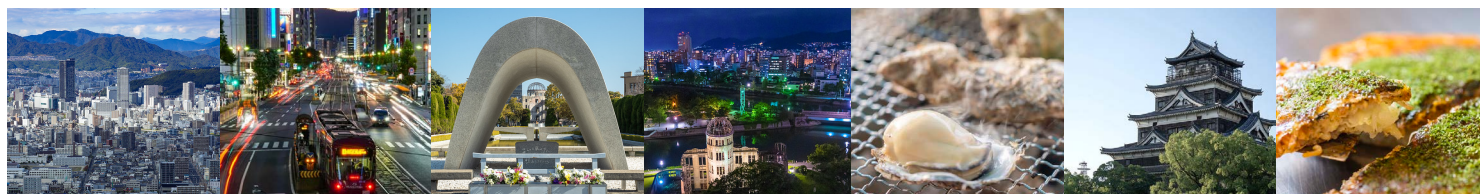


## The 32nd International Display Workshops



### KEYNOTE ADDRESSES

R&D for Future Media  
and the Role of  
Displays

Kikufumi Kanda  
NHK, Japan



MicroLEDs: Where are  
the Successes and  
What are the  
Challenges?

Ioannis Kymissis  
Columbia University, USA



Digital Human Twins  
– Our Future  
Data Selves

Ghislaine Boddington  
University of Greenwich, UK



Beyond Vision,  
Unleash  
the Possibilities

WeiLung Liao  
AUO, Taiwan



### IDW '25 OVERVIEW

IDW '25 will be held to encourage aggressive research and development of display technologies. The conference will focus on five Special Topics and one Topical Session, featuring about eighty fascinating sessions.

The plenary session will feature four keynote addresses under the theme “Beyond Displays: Designing Human-Centered Futures through Emerging Media.”

The three-day conference will showcase 136 invited presentations, 109 oral presentations, and 129 poster presentations. Following the plenary session on Wednesday morning, presentations will commence and continue in eight parallel oral sessions through Friday. Participants will have the opportunity to engage in detailed discussions during poster sessions, Extended Q&A, and the Innovative Demonstration sessions (I-DEMO).

A contest for students from Colleges of Technology (the I<sup>4</sup>D Contest) is scheduled for Thursday. Additionally, a technical exhibition by universities and industry-related businesses will take place over the three days.

# 374

Papers

Late-news papers will be arranged.

### SPECIAL TOPICS

“AI and Smart Society”

“AR/VR and Hyper Reality”

“Automotive Displays”

“Micro/Mini LEDs”

“Quantum Dot Technologies”

### TOPICAL SESSION

“Image Sensing Technologies”

### DEMONSTRATIONS

**I-DEMO**

Cutting-edge  
& Innovative

**I<sup>4</sup>D Contest**

Technical College  
Students

### APPLICATION DEADLINES

**I-DEMO**

Sep. 4 / Oct. 2

**I<sup>4</sup>D Contest**

Sep. 3

### REGISTRATION FEE

Early-bird discount until Oct. 30

**ITE/SID Member** ¥45,000

**Non Member** ¥61,000

**Student** ¥15,000

Registrations received on and after October 31 will be charged an additional ¥10,000 for Member and Non-Member registrants and ¥2,000 for Student registrants.

### LATE-NEWS PAPERS

Submission Deadline  
September 25

### Sponsoring Societies

The Institute of Image  
Information and Television  
Engineers



The Society for  
Information Display



Latest Information is available on the website.

<https://www.idw.or.jp/>

